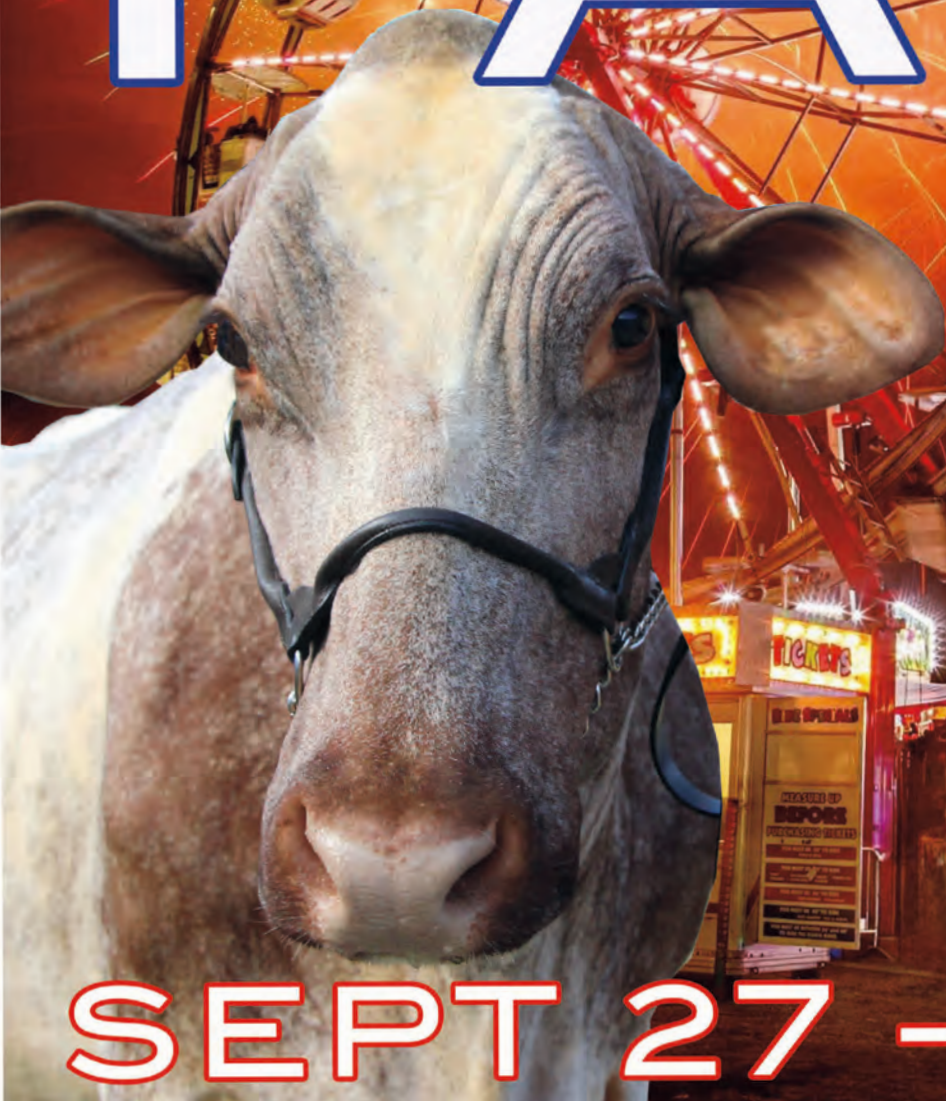


WWW.CUMBERLANDFAIR.COM

2026 CUMBERLAND FAIR



SEPT 27 - OCT 3

CUMBERLAND FARMERS CLUB

SINCE 1869

AMBASSADORS FOR AGRICULTURE... PAST, PRESENT and FUTURE

EXCITING FAMILY ENTERTAINMENT AT THE 2026 - 154TH CUMBERLAND FAIR

All-American Rodeo! Professional Rodeo Company
Museum, Exhibition Hall, Blacksmith, Sugar House, Shingle Mill and Sawmill Demonstrations Daily
Live Local Entertainment | Harness Racing | Motorized Events | Livestock Shows, Displays and Exhibitions
Draft Horse and Ox Pulling and Demonstrations | Gillette Shows - Daily on the Midway
Ride "Bracelet Days" - Monday & Wednesday & Thursday - Ride All Rides - One Price \$30.00 (Fair admission separate)

SUNDAY

Opening Day Events - Grand Parade "Celebrating America's 250th!" | Kid's Tractor Pull | After Dark
Conjuring Carroll | Colby College Woodsman's Show | Jason Tardy High Energy Juggling
Sierra Lyn Harris | Demolition Derby | Josiah Dyer | Plush | Firehouse Chili Showdown | Jack Fossett
Memorial Dynamometer Machine Pulling - Sponsored by Bill Dodge Auto Group

MONDAY

Maine Agricultural Day | Military Monday | Under the Covers | Aaron Nadeau
Horse and Steer Memorial Pulls | Magic Man Phil Smith | Teamsters Triple Challenge Event #1
Wild Horse Band | RaveX Outerlimits Tour - Freestyle Motocross Show
Ride Bracelet Day - Ride All Rides - One Price \$30.00 (Fair admission separate)

TUESDAY

All American Rodeo! | Senior Citizens Day | Jack Fossett | Ross Gregor Adam | Pale Horse
Tickles the Clown | Teamsters Triple Challenge Event #2 | Pinky D's Poutine Eating Contest
Barry Arvin Young | Cupcake Contest | Sweepstakes Oxen Memorial Pull

WEDNESDAY

All American Rodeo! | Joan Kennedy Band | Mr. Magic | 4-H Livestock Auction
Kent the Juggler | Port City Sound | Houston Bernard Band | Whoopie Pie Contest
Teamsters Triple Challenge Event #3 | Memorial Ox Pulls | International Ox Pull
Ride Bracelet Day - Ride All Rides - One Price \$30.00 (Fair admission separate)

THURSDAY

Senior Citizens Day | Andi Fawcett | Plush | Preston & Curry | Port City Sound
Mr. Drew and His Animals Too! | Chase Jobe | Show Steers & Oxen Events
International Horse Pull | Apple Pie Contest | Cumberland Fair Classic Car Show
Jessi & The Rhythm Kings | Maine Antique Tractor Pull
Ride Bracelet Day - Ride All Rides - One Price \$30.00 (Fair admission separate)

FRIDAY

MSTTP Tractor Pull featuring Modified Big-Rig's and Semi Pulls | Ryan Halliburton | Joe Howard Variety Artist
Jack Fossett Band | Nettie Loops - Hula Hoop Experience | The World Famous Grassholes
Henry Lowery | Sweepstakes Horse Memorial Pulls | Draft Horse & Pony Show

SATURDAY

Pig Scramble | Showtime Steve | 43 Degrees North | Kids Ox Pull | Quilts of Valor | Magic Wes Wonder
Dark Horse | Farmer's Horse and Ox Pulls | Timothy James & Band | Julia Gagnon & Friends
MSTTP Truck Pulls | Fireworks Show by Central Maine Pyrotechnics

Monday September 28

Maine Agricultural Day | Military Monday | Under the Covers | Aaron Nadeau | Horse and Steer Memorial Pulls | Magic Man Phil Smith
 Teamsters Triple Challenge Event #1 | Wild Horse Band | RaveX Outerlimits Tour – Freestyle Motocross Show
 Ride Bracelet Day - Ride All Rides - One Price \$30.00 (Fair admission separate)

6:00 a.m. - 9:00 a.m.	Sheep Arrive in Open Pens
7:00 a.m.	Weigh in of all Draft Horses, Oxen and Steers
9:00 a.m. – 9:00 p.m.	Exhibition Hall, Museum, Sugar House, Agricultural Ed Center & Marketplace, Old MacDonalds Farm, Livestock Barns – Open
8:30 a.m.	4-H Dairy Goat Show – Show Arena
9:00 a.m.	Bill Hawkes Memorial Pull - 2130lbs Steer Distance Pull - Pulling Arena 2530 Steer 6 ft pull – Pulling Arena
10:00 a.m. – 8:00 p.m.	Daily Cooking and Crafting Demonstrations - Exhibition Hall
10:00 a.m.	Daily Exhibitions – Heritage Park Museum Area
10:00 a.m.	Triple Challenge – Event # 1 Show Steer & Ox – Blue Seal Show Arena – Sponsored by Merrifield Builders
10:00 a.m. – 1:00 p.m.	Maine Agriculture Day Events – K-6th Grade – see Exhibition Hall book for details
11:00 a.m.	Antique Sawmill Demonstration – Heritage Park Museum Area
12:00 p.m.	Aaron Nadeau - Main Stage in front of Exhibition Hall
12:00 p.m.	Gillette Mid-Way Opens (weather permitting)
12:00 p.m.	Antique Hay Press Demonstration – Heritage Park Museum Area
12:30 p.m.	Harness Racing – Racetrack/Grandstands
1:00 p.m.	4-H Market Hogs weighed
1:00 p.m.	3230 lbs Horse 15ft – Pulling Arena
2:00 p.m.	Steer and Oxen Demonstrations – Blue Seal Show Arena – Heritage Park
2:00 p.m.	Antique Sawmill Demonstration – Heritage Park Museum Area
3:00 p.m.	Wild Horse Band – Main Stage in front of Exhibition Hall
3:00 p.m.	4-H Sheep Obstacle Course - Show Arena
3:00 p.m.	Antique Hay Press Demonstration – Heritage Park Museum Area
3:30 p.m. – 6:30 p.m.	Magic Man Phil Smith – roaming the Fairgrounds
4:00 p.m.	3330 lbs. Ox Distance Pull – Pulling Arena 2930 lbs. Ox Distance Pull – Pulling Arena
4:00 p.m.	4-H Market Hog Show followed by 4-H Swine Show - Show Arena
5:30 p.m.	4-H Market Lambs Weighed
5:30 p.m.	Under the Covers - Main Stage in front of Exhibition Hall
6:30 p.m.	Pig Races - Show Arena
7:00 p.m.	3130 Horse 2lb % Rock Distance
7:00 p.m.	RaveX Outer Limits Tour – Freestyle Motocross Show – In front of Grandstands

Tuesday September 29

All American Rodeo! | Senior Citizens Day | Jack Fossett | Ross Gregor Adam | Pale Horse | Tickles the Clown | Teamsters Triple Challenge Event #2
 Pinky D's Poutine Eating Contest | Barry Arvin Young | Cupcake Contest | Sweepstakes Oxen Memorial Pulls

7:00 a.m.	Weigh in of all Draft Horses, Oxen and Steers
9:00 a.m. – 9:00 p.m.	Exhibition Hall, Museum, Sugar House, Agricultural Ed Center & Marketplace, Old MacDonalds Farm, Livestock Barns – Open
9:30 a.m.	3330 Ox 6ft Pull – Pulling Arena
10:00 a.m. – 8:00 p.m.	Daily Cooking and Crafting Demonstrations - Exhibition Hall
10:00 a.m.	Daily Demonstrations – Heritage Park Museum Area
10:00 a.m.	4-H Market Lamb Show - Show Arena
10:00 a.m.	Triple Challenge – Event # 2 Show Steer & Ox – Blue Seal Show Arena – Sponsored by Merrifield Builders
11:00 a.m.	Mid-Way Opens (weather permitting)
11:00 a.m.	Antique Sawmill Demonstration – Heritage Park Museum Area
11:00 a.m.	Cupcake Contest – Exhibition Hall
11:00 a.m.	Jack Fossett – Main Stage in front of Exhibition Hall
12:00 p.m.	4-H Baby Beef Show - Show Arena
12:00 p.m.	Antique Hay Press Demonstration – Heritage Park Museum Area
12:30 p.m.	3130 lbs. Horse 15 ft. Pull – Pulling Arena
12:30 p.m.	Harness Racing – Racetrack/Grandstands
1:30 p.m.	Ross Gregor Adam – Main Stage in front of Exhibition Hall
2:00 p.m.	Steer and Oxen Demonstrations – Blue Seal Show Arena – Heritage Park
2:00 p.m.	Antique Sawmill Demonstration – Heritage Park Museum Area
2:00 p.m.	4-H Sheep Show - Show Arena
3:00 p.m.	Antique Hay Press Demonstration – Heritage Park Museum Area
3:30 p.m.	3330 lbs. Horse Distance Pull – Pulling Arena
3:30 p.m. – 7:00 p.m.	Tickles the Clown – Roaming the Fairgrounds
4:00 p.m.	Open Swine Show, Show Arena
4:00 p.m.	Pale Horse – Main Stage in front of Exhibition Hall
4:00 p.m.	Logging Agility – Show Steers & Oxen team event – Blue Seal Feeds Show Arena - Heritage Park Museum Area
5:00 p.m.	Tickles the Clown – Balloon Animals – in front of Old MacDonald's Farm
6:00 p.m.	Gordon Robinson Memorial Pull - Sweepstakes Oxen 6 ft Pull – Pulling Arena David Barton Memorial Pull 2930 lbs Oxen 6ft Pull – Pulling Arena
6:00 p.m.	Pinky D's Poutine Eating Contest –sponsored by Pinky D's Poutine Factory – Main Stage in front of Exhibition Hall – submit entries at the Main Office by 3pm or at stage before 5:30; drawing on stage between 5:30 and 6pm for 5 participants – Cash prizes!
6:30 p.m.	Barry Arvin Young - Main Stage in front of Exhibition Hall
6:30 p.m.	Pig Races - Show Arena
6:30 p.m.	Photography Walk with Mike Leonard – meet at Exhibition Hall
7:00 p.m.	4-H All Breed Sheep Lead Line Show - Show Arena
7:00 p.m.	All American Rodeo! – Infield area – NO ADMITTANCE until after Harness Racing has concluded. Entry only through gate by Main Stage

Wednesday September 30

All American Rodeo! | Joan Kennedy Band | Mr. Magic | 4-H Livestock Auction | Kent the Juggler | Port City Sound
Houston Bernard Band | Teamsters Triple Challenge Event #3 | Whoopie Pie Contest | Memorial Ox Pulls | International Ox Pull
Ride Bracelet Day - Ride All Rides - One Price \$30.00 (Fair admission separate)

7:00 a.m.	Weigh in of all Draft Horses, Oxen and Steers
9:00 a.m.	3600-4130 David Gammon Memorial Pull - Oxen Percentage Distance Pull – Pulling Arena Jean Eastman Memorial Pull - Ladies Powderpuff Steer & Ox Distance Pull (min 1700 lb.) – Pulling Arena
9:00 a.m.	Open Sheep Show - Show Arena
9:00 a.m. – 9:00 p.m.	Exhibition Hall, Museum, Sugar House, Agricultural Ed Center & Marketplace, Old MacDonalds Farm, Livestock Barns – Open
10:00 a.m. – 8:00 p.m.	Daily Cooking and Crafting Demonstrations - Exhibition Hall
10:00 a.m.	Triple Challenge – Event # 3 Show Steer & Ox – Blue Seal Show Arena – Sponsored by Merrifield Builders
11:00 a.m.	Robert Morrill Memorial Pull – Sweepstakes Oxen Distance Pull – Pulling Arena
11:00 a.m.	Antique Sawmill Demonstration – Heritage Park Museum Area
11:00 a.m.	Whoopie Pie Contest Judging - Exhibition Hall
12:00 p.m.	Gillette Mid-Way Open (weather permitting)
12:00 p.m.	Antique Hay Press Demonstration – Heritage Park Museum Area
12:00 p.m.	Joan Kennedy Band – Main Stage in front of Exhibition Hall
12:30 p.m.	Harness Racing – Racetrack/Grandstands
2:00 p.m.	Mr. Magic! – Main Stage in front of Exhibition Hall
2:00 p.m.	Antique Sawmill Demonstration – Heritage Park Museum Area
2:00 p.m.	3330 Horse 15 Foot Pull – Show Arena
2:00 p.m.	Steer and Oxen Demonstrations – Blue Seal Show Arena – Heritage Park
3:00 p.m.	Port City Sound Quartet – Roaming the Grounds
3:00 p.m.	Antique Hay Press Demonstration – Heritage Park Museum Area
3:30 p.m. – 6:30 p.m.	Kent The Juggler – strolling entertainment throughout the Fairgrounds
3:30 p.m.	Mr. Magic! – Main Stage in front of Exhibition Hall
4:00 p.m.	Kent the Juggler – in front of Old MacDonald's Barn
4:30 p.m.	4-H Auction: Baby Beef, Market Lambs, Market Hogs - Show Arena
5:00 p.m.	Kent The Juggler – Food Court Area
5:00 p.m.	Houston Bernard Band - Main Stage in front of Exhibition Hall
6:00 p.m.	International Ox Pull – Canadian Head Yoke vs. American Neck Yoke 3 ft. Canadian Style Percentage Pull 2800-3300 lb.
6:00 p.m.	Kent the Juggler – Heritage Park Museum area
6:30 p.m. – 8:00 p.m.	Entries Accepted – Old Fashioned 2 Crust Apple Pie Contest – Exhibition Hall
6:30 p.m.	Pig Races - Show Arena
7:00 p.m.	All American Rodeo! – Infield area – NO ADMITTANCE until after Harness Racing has concluded. Entry only through gate near Exhibition Hall/Main Stage

Thursday October 1

Senior Citizens Day | Andi Fawcett | Plush | Preston & Curry | Port City Sound | Mr. Drew and His Animals Too! | Chase Jobe | Show Steers &
Oxen Events | International Horse Pull | Apple Pie Contest | Cumberland Fair Classic Car Show | Jessi & The Rhythm Kings | Maine Antique
Tractor Pull | Ride Bracelet Day - Ride All Rides - One Price \$30.00 (Fair admission separate)

6:30 a.m.	Entries accepted/weigh-in for Show Steers and Oxen Show – Blue Seal Feeds Show Arena
7:00 a.m.	Weigh in of all Draft Horses, Oxen and Steers
8:00 a.m.	4-H Beef Heifers and other beef steer arrive
8:30 a.m. – 10:30 a.m.	Entries Accepted – Old Fashioned 2 Crust Apple Pie Contest – Exhibition Hall (No vehicles on fairgrounds; use Blanchard Rd Parking lot)
9:00 a.m. – 9:00 p.m.	Exhibition Hall, Museum, Sugar House, Agricultural Ed Center & Marketplace, Old MacDonalds Farm, Livestock Barns – Open
9:00 a.m.	Show Steers and Oxen Show – Blue Seal Feeds Show Arena – Heritage Park
9:30 a.m.	4-H Beef Clipping Contest – Show Arena
10:00 a.m. – 8:00 p.m.	Daily Cooking and Crafting Demonstrations - Exhibition Hall
10:00 a.m.	3230 lbs Horse Distance Pull – Pulling Arena
10:30 a.m.	Deadline for Accepting Apple Pie Entries *no entries accepted after 10:30 a.m.*
11:00 a.m.	Old Fashioned 2-Crust Apple Pie Contest Judging - Exhibition Hall
11:00 a.m.	Antique Sawmill Demonstration – Heritage Park Museum Area
11:00 a.m.	Preston & Curry – Main Stage in front of Exhibition Hall
12:00 p.m.	Gillette Mid-Way open (weather permitting)
12:00 p.m.	Antique Hay Press Demonstration – Heritage Park Museum Area
12:30 p.m.	4-H Beef Heifer Show and other Beef Steer Show
12:30 p.m.	Harness Racing – Racetrack/Grandstands
1:00 p.m.	Show Steer and Oxen Log Scooting Contest – Blue Seal Feeds Show Arena – Class 1 Youth Scooting – sponsored by Enhanced Beauty by Molly Class 2 Youth Log Scooting Class 1 Log Scooting Class 2 Log Scooting - 1st Prize Sponsored by One Stop Earthworks Class 3 Log Scooting
1:00 p.m.	3430lbs Horse Distance Pull - Pulling Arena
1:30 p.m.	Andi Fawcett – Main Stage in front of Exhibition Hall
2:00 p.m.	Antique Sawmill Demonstration – Heritage Park Museum Area
2:30 p.m.	Elsie Miller Memorial Pull - Women's Powderpuff Team of Horses Distance 3 min – Pulling Arena Kids under 16 Single Horse Distance Exhibition 3 min – Pulling Arena
3:00 p.m. – 7:00 p.m.	Port City Sound –Roaming throughout Fairgrounds
3:00 p.m.	Antique Hay Press Demonstration – Heritage Park Museum Area
4:00 p.m.	Chase Jobe – Main Stage in front of Exhibition Hall
4:00 p.m.	Mr. Drew and His Animals Too! – Show Arena

6:00 p.m.	Cumberland Fair Annual Classic Car Show – Racetrack (Participants may enter Racetrack at the conclusion of Harness Racing, approximately 4:30pm)
6:00 p.m.	Jessi & the Rhythm Kings – Main Stage in front of Exhibition Hall
6:00 p.m.	International Horse Pull – Canadian & American Team Competition Two horse percentage pull Canadian Style 3 Foot: Highest load percentage crossed wins 3000-3400 lb.
6:30 p.m.	Pig Races - Show Arena
6:30 p.m.	Maine Antique Tractor Pull – in front of Grandstands

Friday October 2

MSTTP Tractor Pull featuring Modified Big-Rig's and Semi Pulls | Ryan Halliburton | Joe Howard Variety Artist | Jack Fossett Band
Nettie Loops - Hula Hoop Experience | The World Famous Grassholes | Henry Lowrey | Sweepstakes Horse Memorial Pulls | Draft Horse & Pony Show

7:00 a.m. – 9:00 a.m.	Entries accepted for Draft Horse and Pony Show – Outside Riding Arena
7:30 a.m.	Weigh in of all Draft Horses, Oxen and Steers
9:00 a.m. – 9:00 p.m.	Exhibition Hall, Museum, Sugar House, Agricultural Ed Center & Marketplace, Old MacDonalds Farm, Livestock Barns – Open
9:00 a.m. – 11:00 a.m.	Silver Dollar Pancakes with Maine Maple Syrup - Sugar House
10:00 a.m. – 8:00 p.m.	Daily Cooking and Crafting Demonstrations - Exhibition Hall
10:00 a.m.	Daily Demonstrations – Heritage Park Museum Area
10:00 a.m.	Draft Horse and Pony Show – Outside Riding Arena Pony Pair Wagon class Sponsored by Richard Wing & Son Logging Inc. Horse Pair Wagon class Sponsored by Blue Seal and Kent Feeds
10:00 – Noon	Maine Maple Syrup Tasting – Sugar House
10:30 a.m.	Norton Memorial Pull – Three Horse Hitch Distance Pull
11:00 a.m.	Gillette Mid-Way Open (weather permitting)
11:00 a.m.	Antique Sawmill Demonstration – Heritage Park Museum Area
11:30 a.m.	Ryan Halliburton – Main Stage in front of Exhibition Hall
11:30 a.m.	Kilton Lamb Memorial Pull – Sweepstakes Horse Distance – Pulling Arena
12:30 p.m.	Harness Racing – Racetrack/Grandstands
12:00 p.m.	Antique Hay Press Demonstration – Heritage Park Museum Area
1:30 p.m.	Jack Fossett Band – Main Stage in front of Exhibition Hall
2:00 p.m.	Gordon Robinson Memorial Horse Pull - 3430 - 12 ft Pull - Pulling Arena
2:00 p.m.	Antique Sawmill Demonstration – Heritage Park Museum Area
2:00 p.m.	Maine Maple Candy Demonstration - Sugar House
3:00 p.m.	Antique Hay Press Demonstration – Heritage Park Museum Area
3:00-5:00 p.m.	4-H Working Steers arrive
3:00-6:00 p.m.	4-H Dairy arrive
3:00 p.m.	Maine Maple Coated Nuts Demonstration - Sugar House
3:30 p.m.	Henry Lowrey – Main Stage in front of Exhibition Hall
3:30 p.m.	Nettie Loops Hula Hoop Experience – Show Arena
3:00 p.m. – 7:00 p.m.	Joe Howard Variety Artist – strolling throughout Fairgrounds
3:00 p.m. – 5:00 p.m.	4-H Working Steers arrive – Pulling Area
3:00 p.m. – 6:00 p.m.	4-H Dairy Arrive – Livestock area
4:00 p.m.	Maine Maple Sugar on Snow Demonstration - Sugar House
4:00 p.m.	Harnessed Mini-Horse Team Kids Exhibition Event Pulling Arena Sponsored by Jimmy Hawkes
5:00 p.m.	Joe Howard Variety Artist – Food Court Area
5:00 p.m. – 8:00 p.m.	Sample Maine Maple Treats – Sugar House
5:30 p.m.	The World Famous Grassholes – Main Stage in front of Exhibition Hall
6:00 p.m.	Hall Family Memorial Pull Sweepstakes Horse 12 ft - Pulling Arena
6:00 p.m.	Joe Howard Variety Artist – in front of Old MacDonald's Barn
6:30 p.m.	Pig Races - Show Arena
6:30 p.m.	MSTTP Tractor Pulls – in Front of Grandstands
7:00 p.m.	4-H Dairy Clipping Contest - Show Arena

Saturday October 3

Pig Scramble | Showtime Steve | 43 Degrees North | Kids Ox Pull | Quilts of Valor | Magic Wes Wonder | Dark Horse | Farmer's Horse and Ox Pulls
Timothy James & Band | Julia Gagnon & Friends | MSTTP Truck Pulls | Fireworks Show by Central Maine Pyrotechnics

7:00-8:30 a.m.	Entries accepted for Farmer's Draft events
7:30 a.m.	Oxen weigh-in
8:00 a.m.	4H Rabbit Show – *NOTE – NEW LOCATION* - Grandstands, Downstairs
9:00 a.m. – 9:00 p.m.	Exhibition Hall, Museum, Sugar House, Agricultural Ed Center & Marketplace, Old MacDonalds Farm, Livestock Barns – Open
9:00 a.m.	Rabbit show – ARBA and Open Show – *NOTE – NEW LOCATION* - Grandstands, Downstairs
9:00 a.m.	Youth Poultry Show – Livestock Show Ring – sponsored by Blue Seal Feeds
9:00 a.m.	Pig Scramble (entry completed in Main office by 7 p.m. Thursday)
9:00 a.m.	Farmer's Draft Horse, Mule and Pony Events – Blue Seal Feeds Show Arena
	Farmer's Single Draft Horse Log Twitch – Blue Seal Feeds Show Arena Bruce Alexander Memorial - Farmer's Team Draft Horse Team Log Scoot – Blue Seal Feeds Show Arena – 1st Prize Sponsored by One Stop Earthworks
9:30 a.m.	Calf Scramble – Pulling Arena (Drawing prior to event)
9:30 a.m.	Showtime Steve - in front of the Main Stage
10:00 a.m.	Gillette Mid-Way Open
10:00 a.m.	43 Degrees North – Main Stage in front of the Exhibition Hall
10:00 a.m. – 8 p.m.	Daily Cooking and Crafting Demonstrations - Exhibition Hall
10:00 a.m.	Kids 6 ft Pulls - Sponsored by Fielding's Oil & Propane

	900 – 1130 lbs. (12& under)
	1131- 1330 lbs. (16& under)
	1331 – 1730 lbs. (16& under)
11:00 a.m.	Antique Sawmill Demonstration – Heritage Park Museum Area
11:30 a.m.	Farmer’s Draft Horse, Mini and Pony Demonstrations - Blue Seal Show Arena
	Youth (17 & Under) Draft Horse and Pony and Mini Horse Single Log Twitch Demonstration
	Youth (17 & Under) Draft Horse and Pony and Mini Horse Team Log Twitch Demonstration
11:30 a.m.	Showtime Steve - in front of the Main Stage
11:30 a.m.	Farmer’s Steer & Ox Distance Percentage Pulls (Light, Medium, Heavy) – Pulling Arena
12:00 p.m.	Quilts of Valor Presentation – Main Stage in front of Exhibition Hall
12:00 p.m.	Money Scramble - 12-year-old and under – no parents allowed in the ring - Show Arena
12:00 p.m.	Antique Hay Press Demonstration – Heritage Park Museum Area
12:30 p.m.	Showtime Steve - in front of the Main Stage
12:30 p.m.	Harness Racing – Racetrack/Grandstands
12:30 p.m.	Pig Races - Show Arena
1:00 p.m.	4-H Dairy Show - Show Arena
1:00 p.m.	Farmers Horse Distance Percentage Pull – Pulling Arena
1:30 p.m.	Chase Jobe – Main Stage in front of Exhibition Hall
2:00 p.m.	4-H Working Steers Show and Pulling - Pulling Arena
2:00 p.m.	Antique Sawmill Demonstration – Heritage Park Museum Area
2:30 p.m. – 5:30 p.m.	Magic Wes Wonder – strolling throughout Fairgrounds
3:00 p.m.	Magic Wes Wonder – in front of Old Mac Donald’s Barn
3:00 p.m.	Antique Hay Press Demonstration – Heritage Park Museum Area
3:30 p.m.	Timothy James (and band) – Main Stage in front of Exhibition Hall
5:00 p.m.	Magic Wes Wonder - Heritage Park Museum Area
5:00 p.m.	Large livestock - Sheep, Dairy, Beef, Swine - begin departure – Livestock Area will be closed to public
6:00 p.m.	Julia Gagnon & Friends – Main Stage in front of Exhibition Hall
6:30 p.m.	MSTTP Truck Pull – Front of Grandstand
8:30 p.m. (approx.)	Central Maine Pyrotechnics – FIREWORKS! - in front of Grandstands

Sunday, October 4

Free Admission | Harness Racing Only - Post Time 12:30 PM

9:00am – 11:00am-	4-H exhibits removed from 4-H Exhibition Hall
9:00 am – noon	items removed from Exhibition Hall
10am – 12 noon	Giant Pumpkin & Squash removal *Fair assistance will only be available during this time*

ADMISSION POLICY

Adults \$15 - Children 12 and under Free. Tuesday and Thursday ONLY - Senior Citizens (65+) \$6

WEEKLY ADMISSION PASS - \$75. PARKING - FREE.

No pets are allowed except for service animals. Per State of Maine Law: A “service animal” is a DOG that has been trained to do work or perform tasks for the benefit of a person with a disability. Other species of animals are NOT considered service animals in context of Public Accommodations (PAs). A service animal is an aid that helps a person with a disability access services. Service Animals are **not pets**.

All Government Schools (K thru 6) and buses are to use specified parking and Gate 8 access only.

School Children Chaperones: School children chaperones accompanying school children on a school bus will be admitted free at Gate 8 ONLY. Students over 12 years of age will be charged regular daily admission. See the Special Group Rate section below for advance planning. Chaperones arriving in private vehicles will be directed to standard gates and charged regular daily admission.

Home Schools: Kindergarten through 6th grade children will be admitted free on Maine Agricultural day at Gate 8, regular admission will apply at other times and dates. Chaperones will be charged regular daily admission.

Day Care Chaperones: Day care children will be admitted free on Maine Agricultural day at Gate 8, regular admission will apply at other times and dates. Chaperones will be charged regular daily admission.

Disabled Individuals: Non ambulatory (wheel chaired) individuals will be admitted free, due to lack of access to all areas of the Fairgrounds. Chaperones and Companions will be charged regular daily admission. No other disability discounts will apply.

Military: Military Monday ONLY - Military with proper ID - \$6.00 admission - Requires Department of Defense ID for Active Duty, Current Reservists, Retired Personnel, VA Health Benefits Card, State Driver’s License showing Veteran Designation or DD214 (no dependent IDs considered)

Special Group Rates: Large group rates **must be pre-approved** and requests for special rates must be made at least one week prior to the Fair Opening. Requests may be presented to the Secretary for consideration: cfsecretary@maine.rr.com.

Please note that livestock will begin departure by Saturday evening from the fairgrounds. The Cumberland Farmers Club hopes that you understand that the animals and their keepers do everything possible to minimize any upset they may encounter during their stay on the grounds.

General Notices to All Fairgoers: By entering the Cumberland County Fair, attendees acknowledge that participation in this public event involves inherent risks and accept responsibility for their own wellbeing, as well as for any minor or individual in their care. Entry to the Fairgrounds constitutes implied consent to follow all State, Federal, Local, or organizational health and safety requirements in effect at the time of the event. Failure to comply with required protocols may result in removal from the Fairgrounds by the Cumberland Farmers Club (CFC) or authorized personnel. Entry serves as advance consent to exit the event upon request, without protest or refund. Attendance at the Fair is voluntary and signifies acceptance of all potential risks, including personal injury or other harm. By entering, attendees agree to hold harmless and release the Cumberland Farmers Club (CFC) and its affiliates, officers, directors, representatives, and successors (“Released Parties”) from any and all claims or liabilities arising from participation in the Fair.

Photography & Media Notice: By entering the Cumberland Fairgrounds, attendees understand and agree that photography, video, and audio recording may occur. The Cumberland Farmers Club and its authorized partners may use these images and recordings for promotional, educational, or informational purposes, including social media, websites, printed materials, and future fair advertising. Attendance at this public event constitutes consent to be photographed or recorded.

Exhibitor Premium Notice: If, for any unavoidable reason, the Cumberland Farmers Club (CFC) is unable to meet its full premium obligations, exhibitors agree to accept a prorata reduction in premiums corresponding to any such losses. Submission of an entry constitutes acceptance of these terms as a condition of exhibiting or displaying at the Cumberland County Fair.

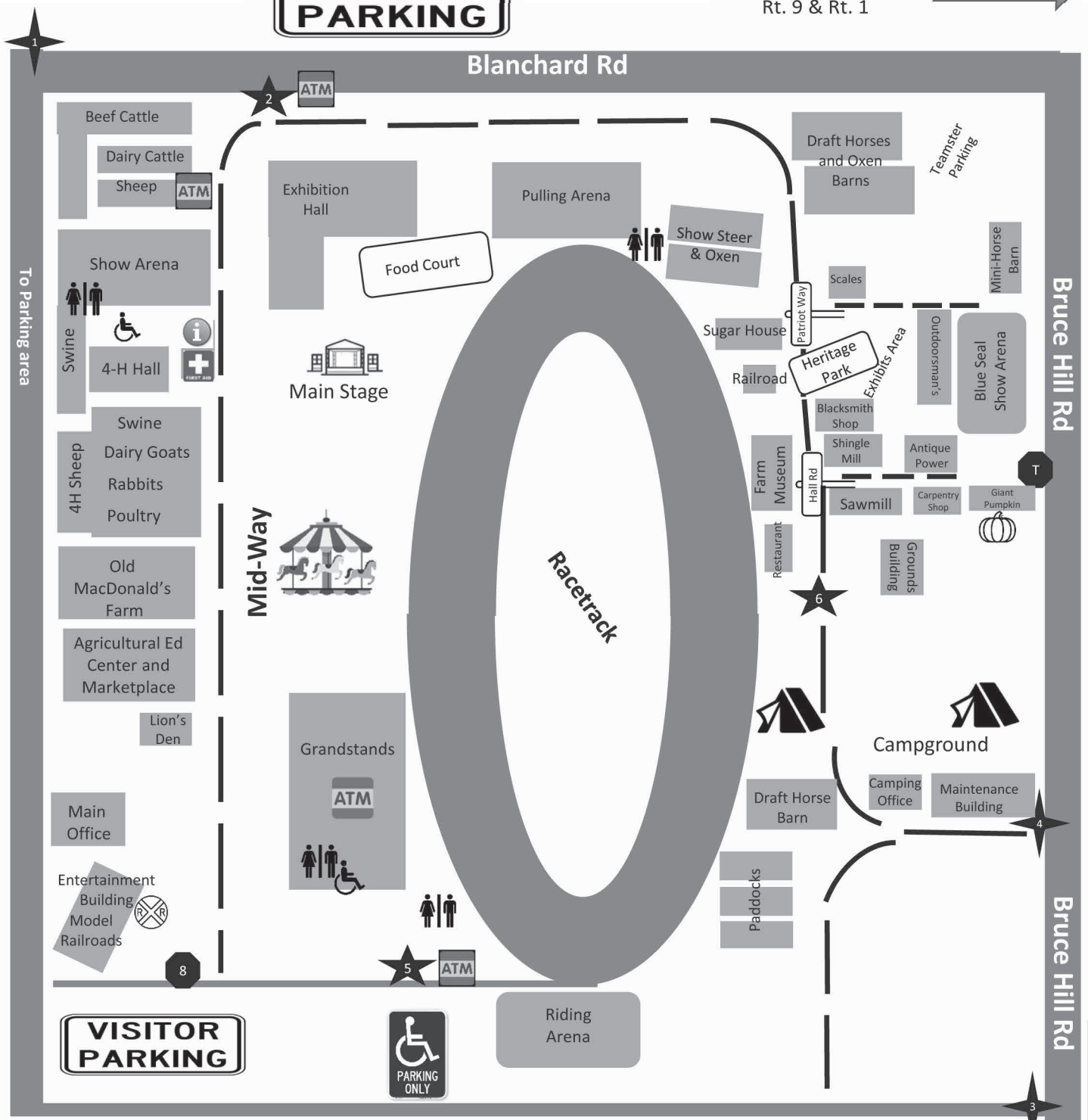
Fairgrounds Camping: All trailers must have holding tanks • Dumping station available on the grounds. • All sites have power/water.

Fair Week Camping Rates: Employee, Livestock, and 4-H Exhibitor Rates: \$55/week | Vendors \$80 Week | Non-Exhibitors: \$220/week (includes 2 week passes) | **Daily Rate: \$35 Summer Rates: \$50** per day for campers; **\$25** per day for tents; **\$450** monthly rate. **Dumping station: \$35** Note: pump-out on site may be available during Fair, see Camping Office. Negotiable weekly rates are available for longer term summer (non-fair) camping. Contact Tom Matthews Superintendent of Camping at 207-756-9738 for further details. Checks made payable to Cumberland Farmer’s Club. Register at the Camping Office on arrival. **Reservations:** You may fill out and submit the form online at www.cumberlandfair.com. However, if you wish, you may print/mail the form at the back of the book to the Camping Superintendent at the following address: Tom Matthews 25 Lookout Ln Windham ME 04062

Camping Rules continued on page 10.

VISITOR PARKING

To Cumberland Center
Rt. 9 & Rt. 1



- Admission Gate
- Limited Access Entrance
- General Vehicle Entrance
- Information
- First Aid

VISITOR PARKING



Leighton Barn

To Rt. 100

The right tool for the right job

2026 Ram Commercial Trucks & Vans,
now available with fleet pricing at Lee



Lee Has The Right Upfit
For Your Business:

- Agriculture
- Construction
- Delivery
- Electrical
- HVAC
- Landscaping
- Plumbing
- Telecom
- Locksmith

CUMBERLAND FAIR EXCLUSIVE!

\$1000

**IN YOUR CHOICE OF
ACCESSORIES WHEN YOU
BUY A NEW RAM AT
LEE IN WESTBROOK**

EXPIRES 12/31/26. PRESENT THIS AD TO REDEEM.



Lee Dodge Chrysler Jeep Ram
200 Main Street, Westbrook
207-856-6685 · leedodgechryslerjeep.com



HALL

IMPLEMENT CO.

Farm, Lawn & Grounds Care Equipment

**1 John Deere Road
(at 202 & 302 Rotary)
Windham, ME 04062
207-892-6894**

**Monday - Friday 7:30 am - 5 pm
Saturday 7:30 am - 12 pm**

www.hallimplementco.com

**TRUSTED SALES & SERVICE
SINCE 1961**